

# TR-1

|                              |  |
|------------------------------|--|
| General specification        |  |
| Operating temperature        | -10° C ~ +50° C  |
| Material                     | Shock-resistant plastic  |
| Size (stored)                | 340 mm (H) X 860 mm (L) X 510 mm (W)   |
| Size (handle deployed)       | 820 mm ~ 1185 mm (H) X 1085 mm ~ 1290 mm (L) X 510 mm (W)                            |
| Weight                       | 17 kg  |
| Waterproof Specification     | Splash-proof   |
| Power source                 |  |
| Rechargeable battery         | Dedicated 16.4 V lithium ion battery   |
| Standard voltage             | 14.4 V   |
| Battery life                 | 3 ~ 5 hours  |
| External power source        | AC100 V ~ 220 V  |
| Charging time                | 2 ~ 6 hours  |
| Detection Parameters         |  |
| Depth range                  | 50 mm ~ 1500 mm *  |
| Width measuring              | 350 mm   |
| Data collection speed        | Walking speed around 4 km/hour   |
| Frequency range              | 135 MHz ~ 835 MHz (Center frequency 400 MHz)   |
| Detectable material          | Metal pipe, Plastic pipe, Cable and Optical fiber                                    |
| Accuracy of depth estimation | Normal measurement : ±100 mm<br>High-sensitive output measurement : ±300 mm ~ 500 mm |

\*Specification may change without prior notice.

\*The surrounding environment and quality of soil affects the measurable depth and the accuracy of depth estimation.

 **TAKACHIHO SANGYO CO., LTD.**

**Iwakura Plant & Overseas Division**  
10-1, Ehigashi, Higashi-Machi, Iwakura-Shi  
Aichi-Ken 482-0041 Japan  
TEL +81-587-37-7771

<https://www.takachiho-sc.com>

NO.23.04.100

**Simplified Ground Penetrating Radar**

# TR-1



**TAKACHIHO**

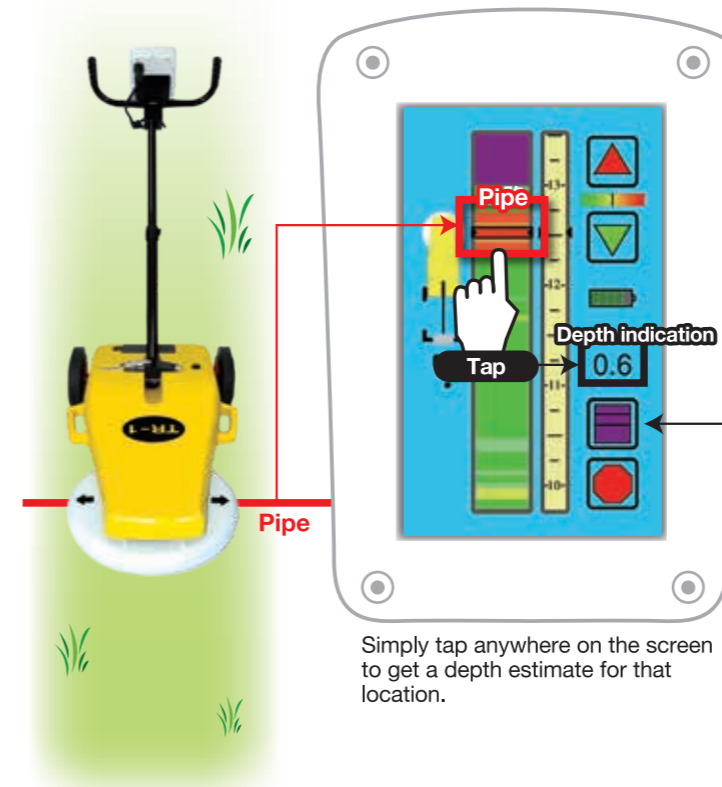
©2023 TAKACHIHO SANGYO CO., LTD. All rights reserved.

# Simplified Ground Penetrating Radar TR-1

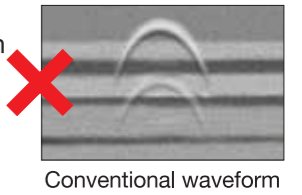


- **SAVE TIME:** Avoid unnecessary digging by scanning for hazards and utilities beforehand.
- **SAVE MONEY:** Avoid costly utility strikes and damage to equipment by scanning before you dig.
- **SAVE LIVES:** Avoid injury to workers from utility strikes

## Simple user interface. No complicated menus or displays

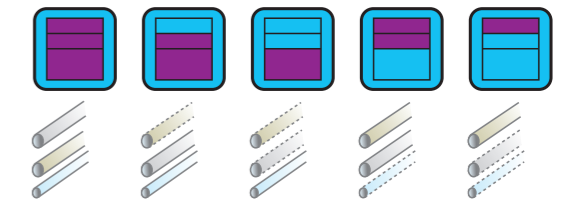


No more complicated waveforms. The TR-1 screen displays the likelihood hazards in a clear color-coded way. No expertise required.



### Chronos masking function

Select which depth ranges to display and which to hide using Chronos masking. Identify multiple utilities buried at various depths by isolating individual scan layers.

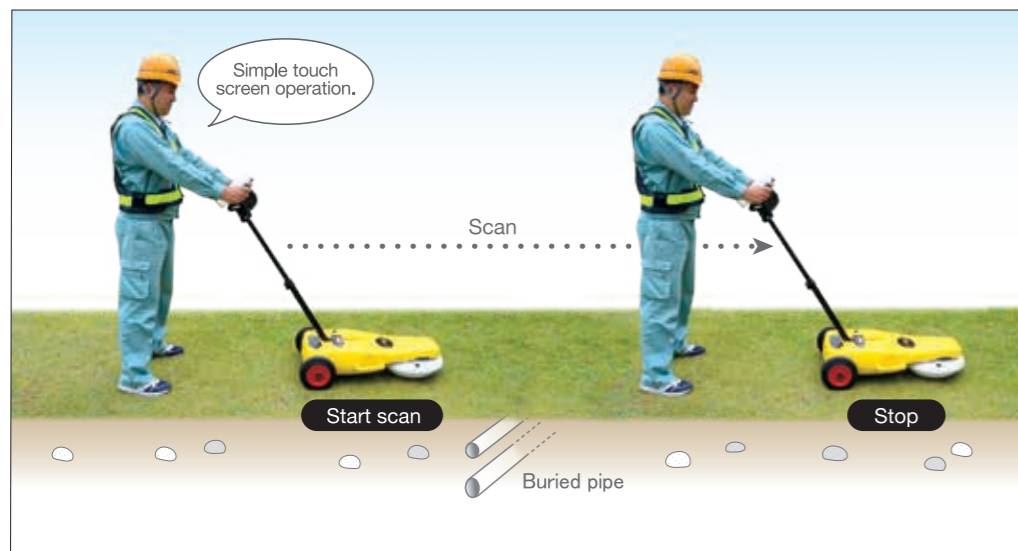


Tapping the masking icon allows the user to toggle which view they prefer, such as top layer only, top and middle, bottom only etc.

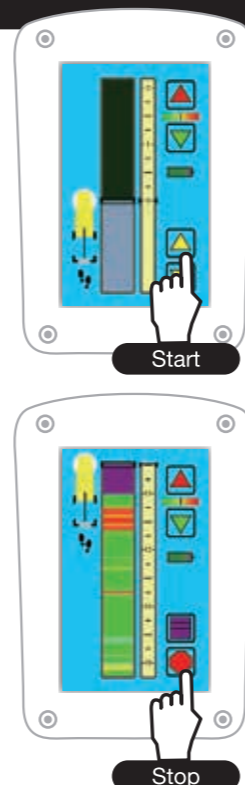
Simply tap anywhere on the screen to get a depth estimate for that location.

## Simple to operate - No training required.

Tap to begin scan. Confirm the buried object and push to end scan. **No special training or expertise required.**



Searchable depth : 50 mm ~ 1500 mm/Width measuring : 350 mm



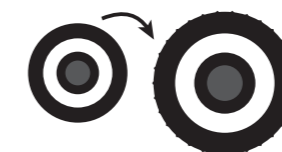
## Use on any surface including irregular terrain

TR-1 can be used on any surface, including unpaved areas.



Off-road tires are available for irregular terrain such as sandy areas, tall grass or unpaved gravel.

**Tires are easy to change.**



Off-road tires is available as an optional accessory.

## Lightweight



TR-1 is lightweight and compact making it easy to carry from jobsite to jobsite. No set-up or assembly required.

